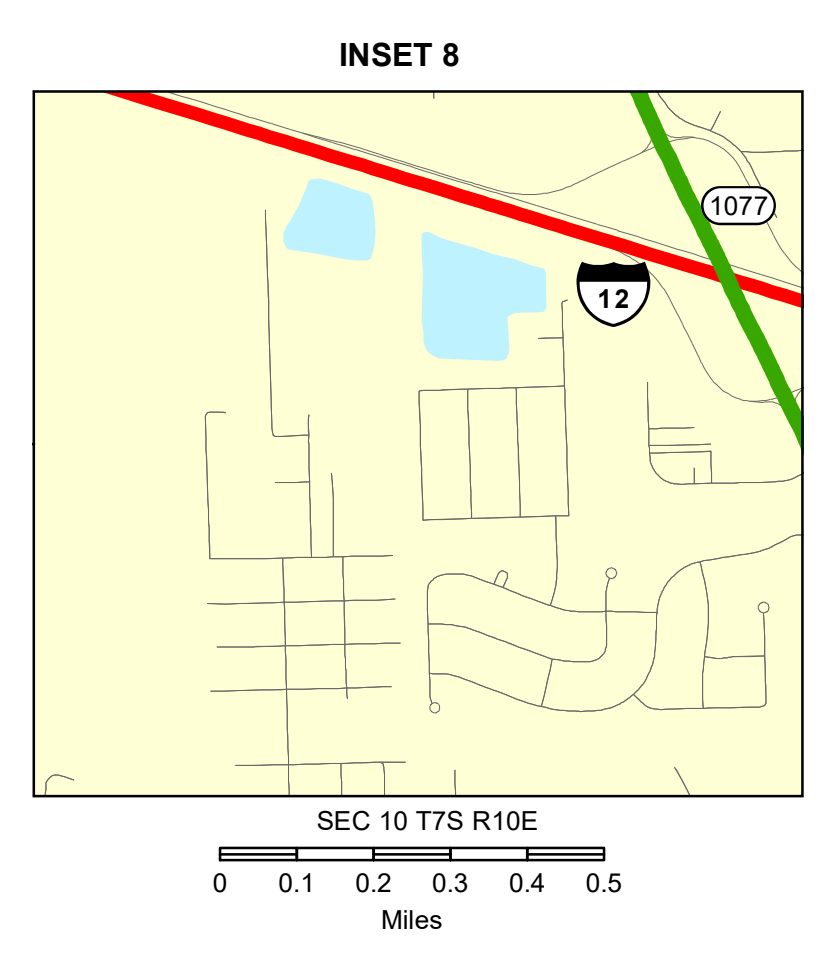
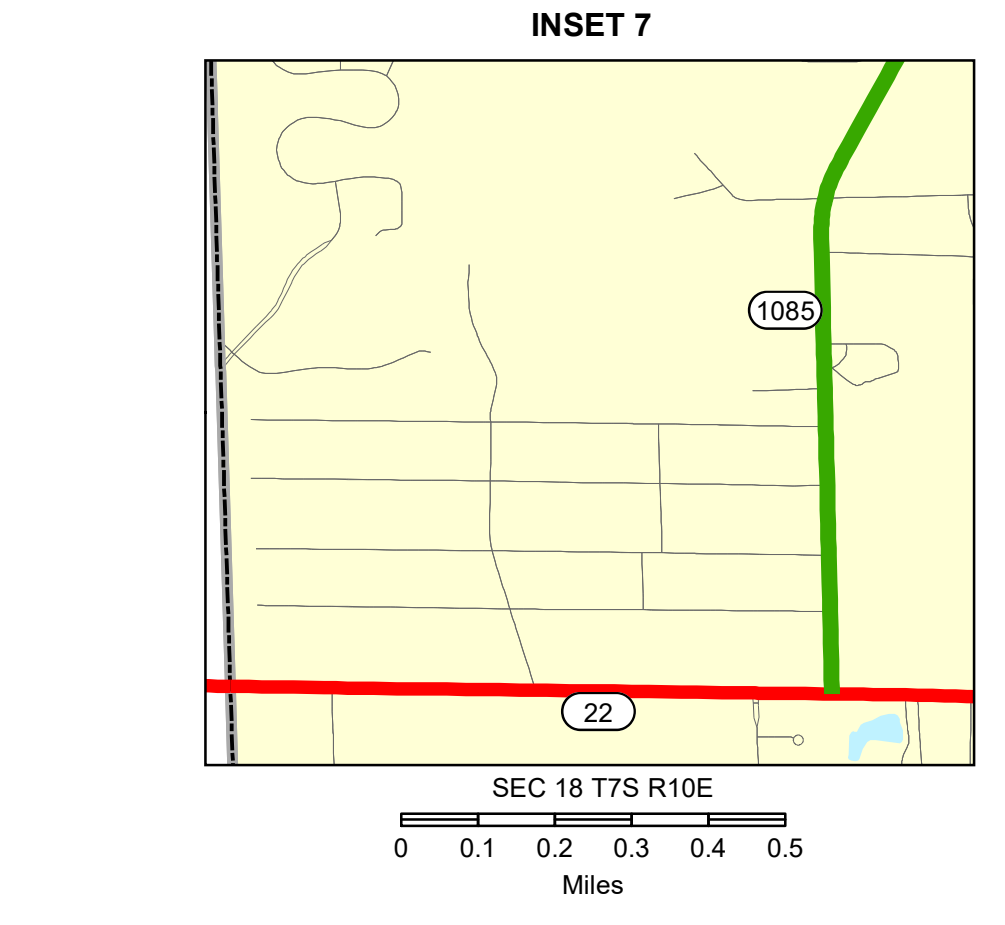
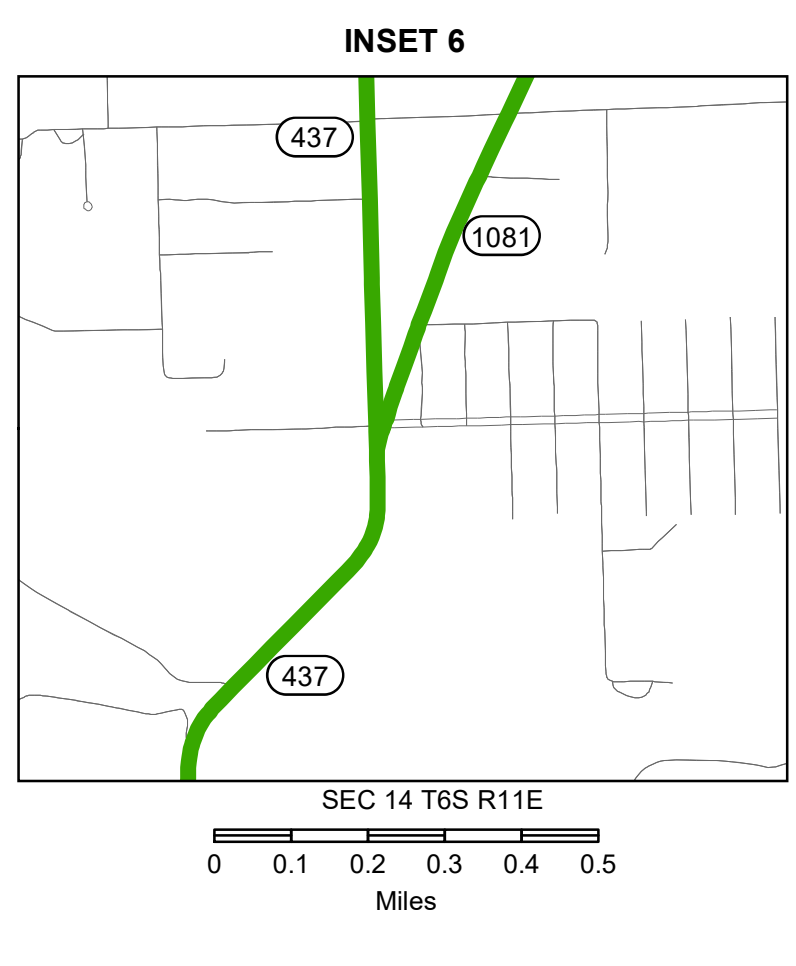
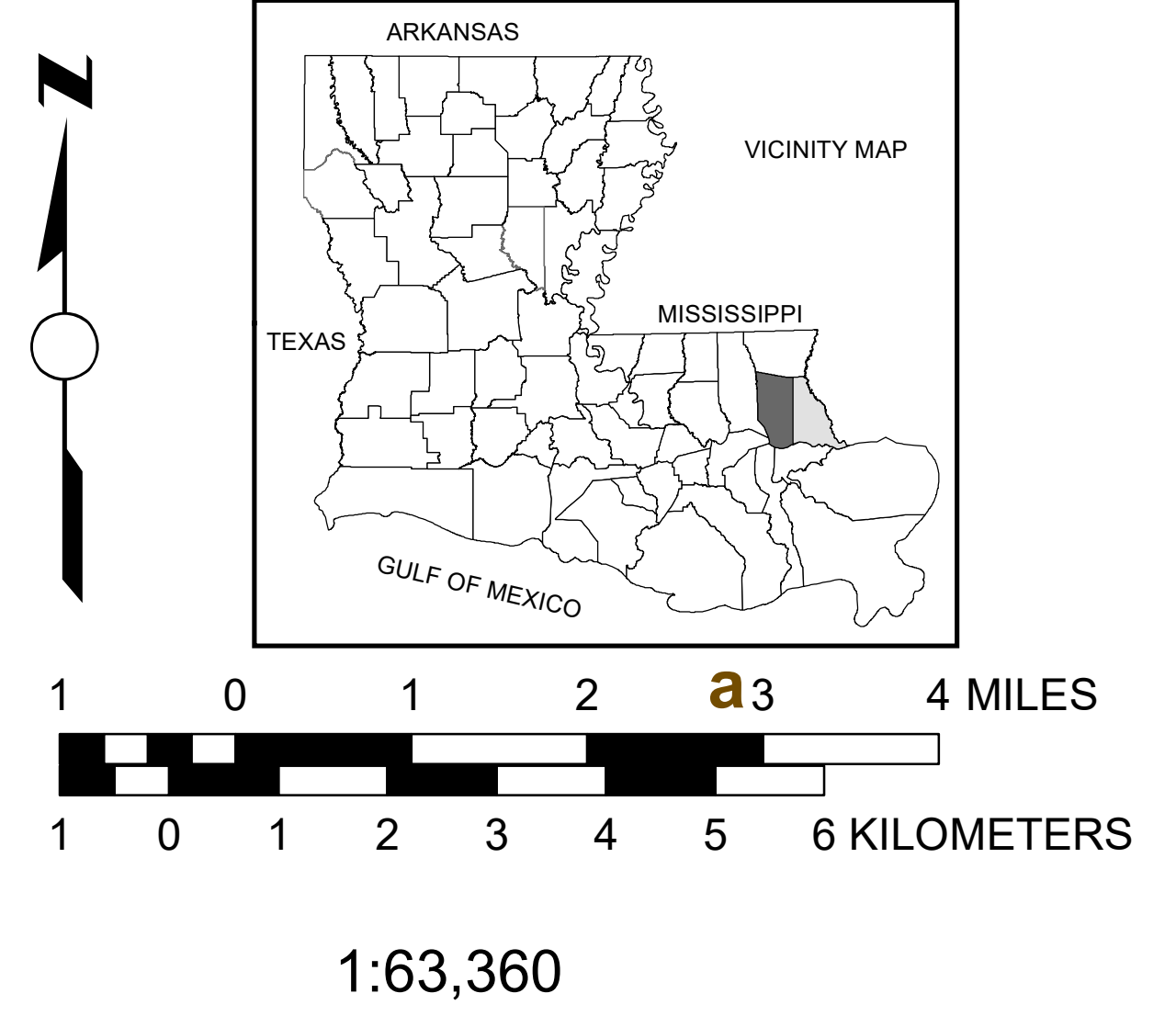
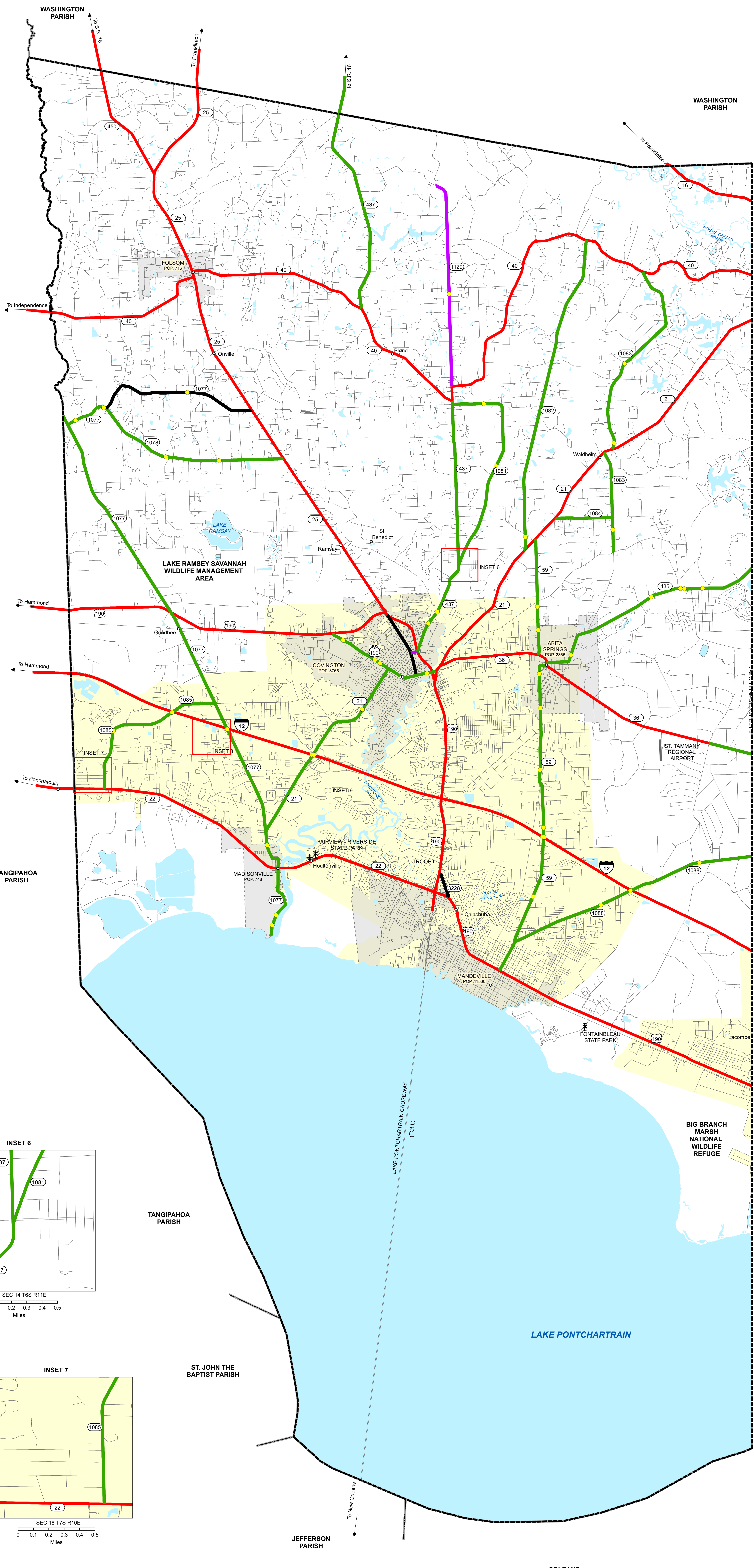


- Existing State Highway System to Remain
- State Highways Proposed for Transfer to Local Government Roadway System
- State Highways Transferred to Local Government Roadway System
- State Highways to be Transferred Under Existing Agreements with Local Government
- Local Roads with Existing Agreements for Transfer to State Highway System
- Proposed State Highway Construction with Existing Agreements
- Local Roads Proposed for Transfer to State Highway System
- Proposed State Highway Construction
- Local Government Roadway System
- State System Ferries
- Bridges Proposed for Transfer
- Movable Bridges Proposed for Transfer
- Water Bodies
- City Limits
- Urbanized Areas
- Urban Areas



**RIGHT - SIZE THE
STATE HIGHWAY SYSTEM
ST. TAMMANY PARISH
WEST SECTION
LOUISIANA**

MAP UPDATED FEBRUARY 2022
POPULATION FROM 2010 CENSUS

PREPARED BY THE
DEPARTMENT OF TRANSPORTATION AND DEVELOPMENT
OFFICE OF MULTIMODAL PLANNING

IN COOPERATION WITH THE
U.S. DEPARTMENT OF TRANSPORTATION
FEDERAL HIGHWAY ADMINISTRATION

**INFORMATION PORTRAYED ON THIS
MAP REFLECTS THE STATE HIGHWAY
SYSTEM AS OF FEBRUARY 2022**